

# Available

## For Lease

Up to 20,160 Square Feet  
Office/Showroom Space

*4200 Norex Drive  
(Hwy 5 West to Century Blvd.)*

or

*(New Hwy 212 to Powers)  
Chaska, MN*



**Exclusively Marketed by:  
David J. Bruce**

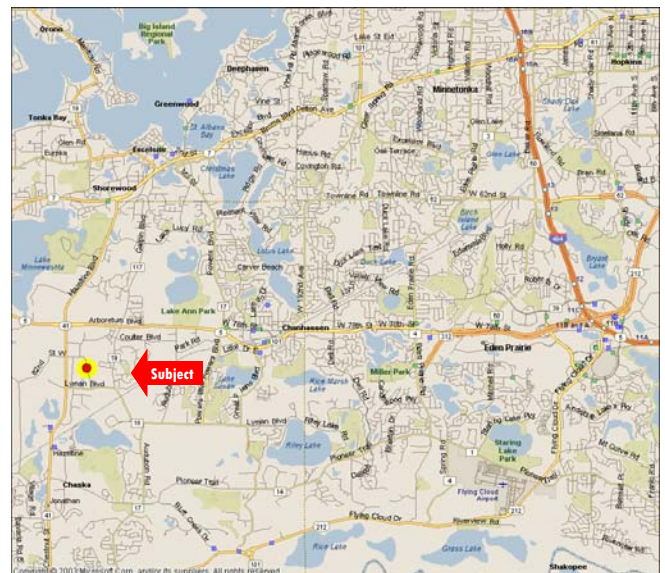
Phone: 952-525-9644

Email: [dbruce@cchaseco.com](mailto:dbruce@cchaseco.com)

The C. Chase Company  
5353 Gamble Drive, Suite 310  
Minneapolis, MN 55416-1509

### Highlights:

- 20,160 SF total available
- Office space finished to suit
- Dock and Drive-in
- 18' ceiling heights
- Fully sprinklered
- Floor drain
- Fabcon construction
- Clean, well maintained
- Many amenities in the area
- Available April 1st



**The C. Chase Company**  
*Real Estate Brokerage and Consulting*