



Available

For Sale

1 Units

1,493 Square Foot

Office Condominium Space

718 Washington Avenue N.
Minneapolis, MN

SOHO

Exclusively Marketed by:

Bruce Bahneman

Cell: 612-865-8982

Email: bruceb@cchaseco.com

Peter Tanis

Phone: 952-224-0723

Email: ptanis@cchaseco.com

The C. Chase Company

5353 Gamble Drive, Suite 310

Minneapolis, MN 55416-1509

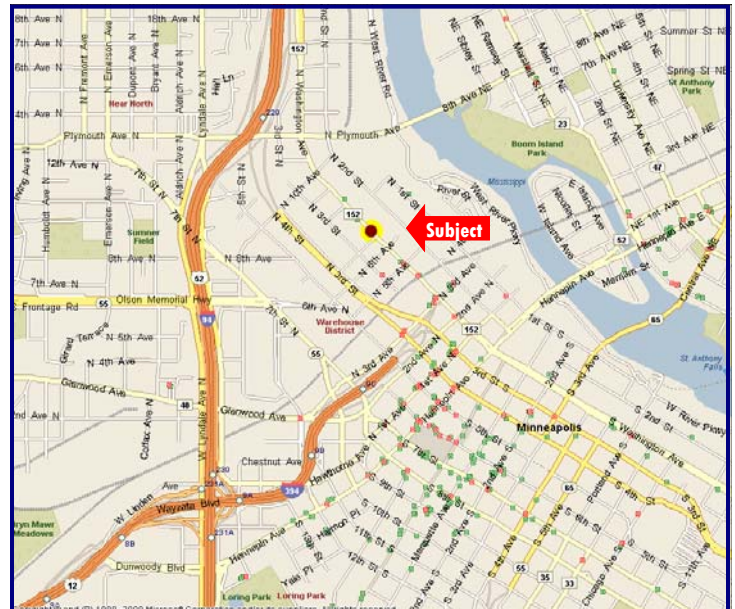
Phone: 952-525-1000

Fax: 952-525-1335

Website: www.cchaseco.com

Property Highlights:

- Great Warehouse District location
- Renovated in 2007
- Available immediately
- Located blocks from Twins stadium and light rail station
- Contract for Deed is available



The C. Chase Company

Real Estate Brokerage and Consulting

Information contained herein has been obtained from the owner of the property or from other sources that we deem reliable. We have no reason to doubt its accuracy, but we do not guarantee it.



Availabilities:

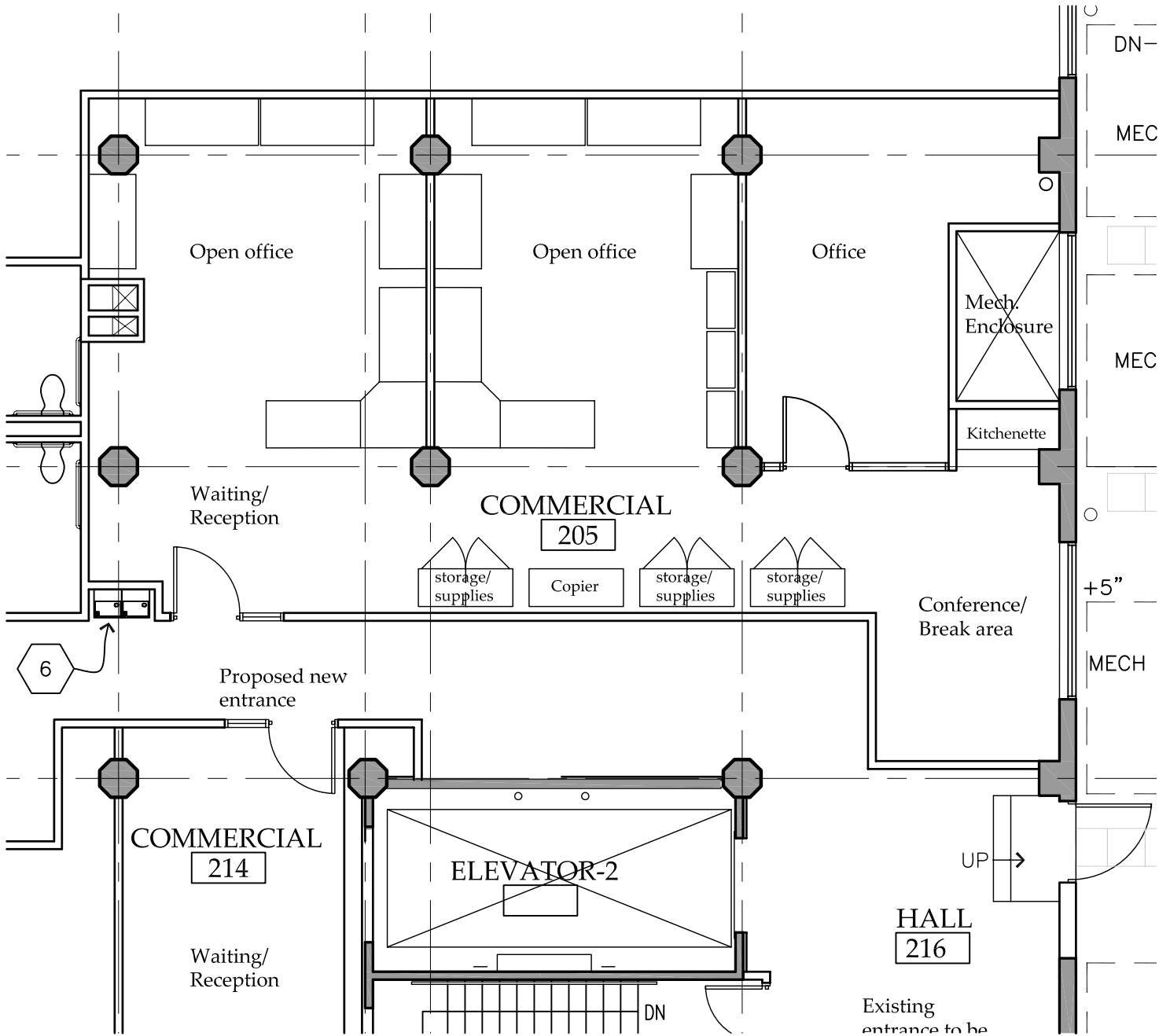
<u>Suite Number</u>	<u>Available SF</u>	<u>Listing Price</u>
205	1,493	\$155,000.00

Building Features:

2011 Property Taxes: \$4,890.00, Monthly association dues: \$382.00, One time working capital dues at closing: \$342.06

- Built in 1918 – 1921
- 8" poured in place concrete floors with large octagon shaped concrete columns
- Ceiling height: 10½ – 13 feet
- All new infrastructure including: HVAC, electric, telephone/Internet connections
- New common bathrooms on each floor
- Updated passenger elevator and full freight elevator
- Loading dock
- Self-storage spaces available for sale in the building lower level
- Ample off-street parking and leased parking available close by
- Easy access to downtown Minneapolis, the warehouse district, and interstate system
- Restaurants nearby include:
 - Be'wiched Deli – voted top 10 Sandwich Shop in the US by Bon Appétit magazine; voted 2009 Best Delicatessen by City Pages
 - Bar La Grassa – voted Restaurant of the Year by Star Tribune Twin Cities Metro magazine
 - Bunkers
 - The Loop Bar
 - Black Sheep Pizza
 - Cuzzy's





Floor Plan

Unit 205

1/8" = 1'-0"

205

6/27/2006
06007-012-40

Project Name:
SoHo Commercial Condos
718 Washington Ave. N, Minneapolis
Drawing Name:
Partial Second Floor Plan

